

# 초음파를 이용한 손목 및 손 통증의 진단 및 치료



정 종 필

서울아산신경과의원

## Ultrasound guided diagnosis and treatment of wrist and hand pain

Jongpil Jeong, MD

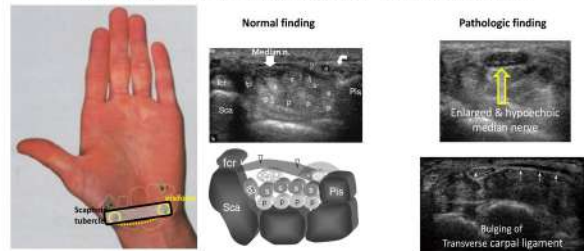
Seoulasan neurology clinic

### Carpal tunnel syndrome

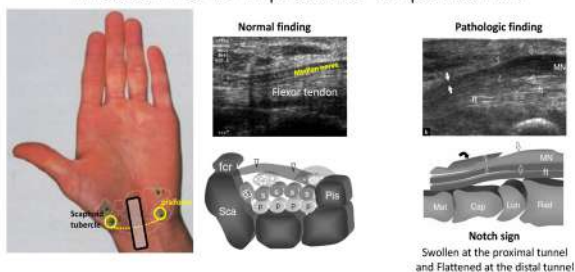
- "a symptomatic compression neuropathy of the median nerve at the level of the wrist"



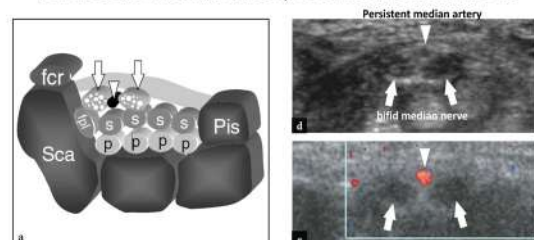
### Carpal tunnel syndrome Median nerve in proximal carpal tunnel



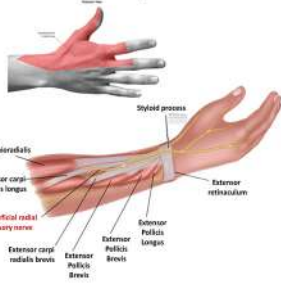
### Carpal tunnel syndrome Median nerve in proximal carpal tunnel



### Normal variant of median nerve Persistent median artery & bifid median nerve



## Superficial radial sensory nerve



- At the distal forearm, Superficial radial sensory nerve
- courses towards the radial aspect of the forearm
- pierces the deep fascia
- travels between the brachioradialis and extensor carpi radialis longus tendons

## Superficial radial sensory nerve



## Ulnar nerve



## Ulnar nerve



## Ulnar nerve around Guyon tunnel

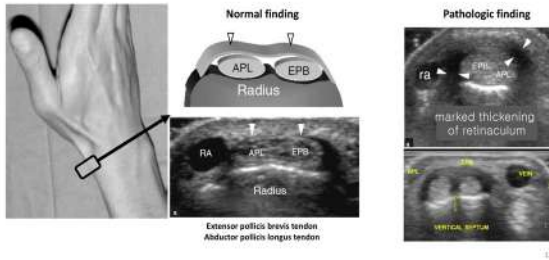


## De Quervain's disease

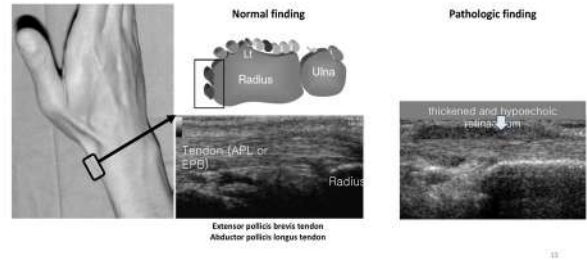
- Mechanical tenosynovitis of the 1<sup>st</sup> compartment



### De Quervain's disease Ultrasound guided treatment



### De Quervain's disease Ultrasound guided treatment



### Trigger finger



- Stenosing tenosynovitis of the flexor tendons
  - with thickening of the **A1 pulley**,
  - tendon swelling and
  - subsequent impingement of the involved tendons in the narrowed digital tunnel
- Carpal tunnel syndrome
  - can be an associated disorder

### US finding of trigger finger

