

상지 근육과 상지 신경의 해부학(상완신경총 포함)



배 종 석

한림대학교 의과대학 신경과

Anatomy of muscle and nerve in upper limbs (with Brachial Plexus)

Jong-Seok Bae, M.D., Ph.D.

Department of Neurology, Kangdong Sacred Heart Hospital, College of Medicine, Hallym University

Correlative Anatomy of Nerve & Muscle in Upper limbs

Jong Seok Bae

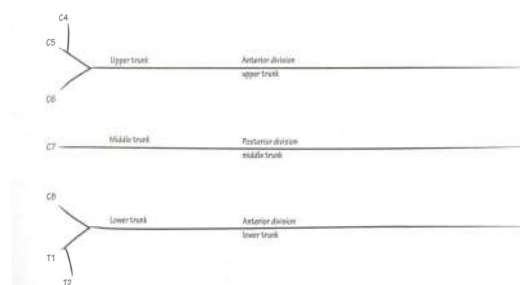
Department of Neurology

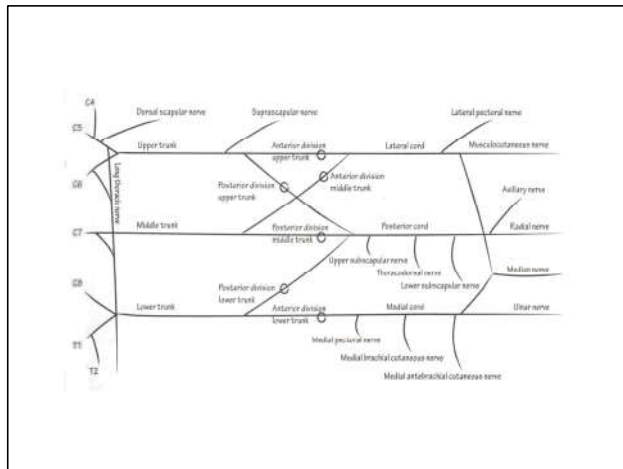
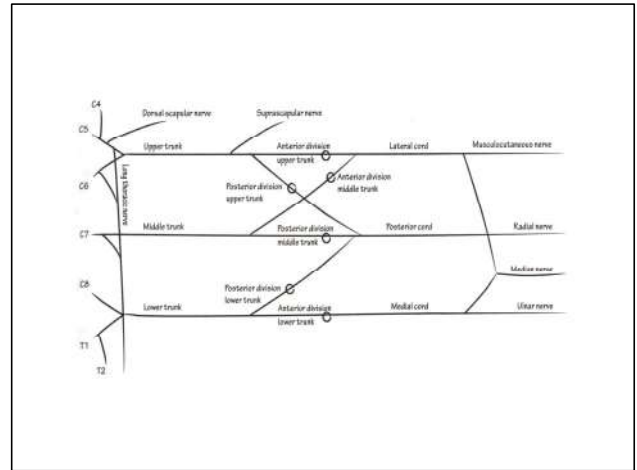
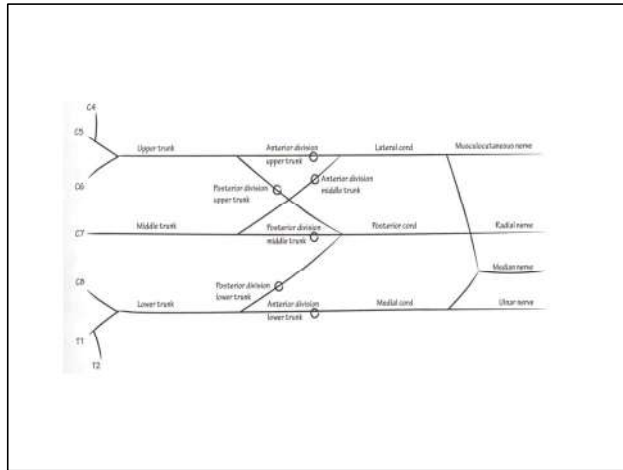
Kangdong Sacred Heart Hospital

Contents

1. Drawing the brachial plexus
2. Nerve of upper limb
3. Muscle of upper limb

1. Drawing the brachial plexus

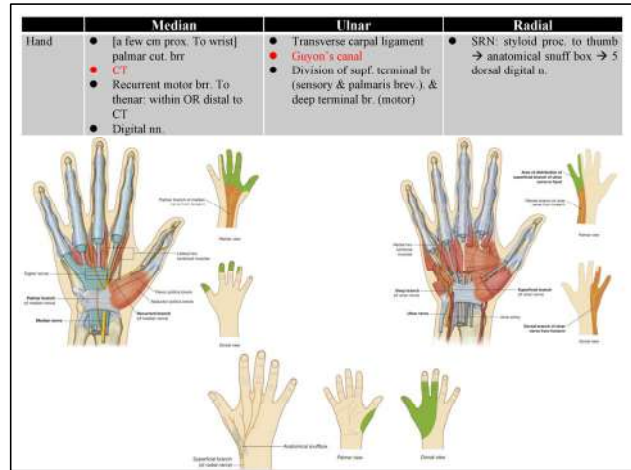
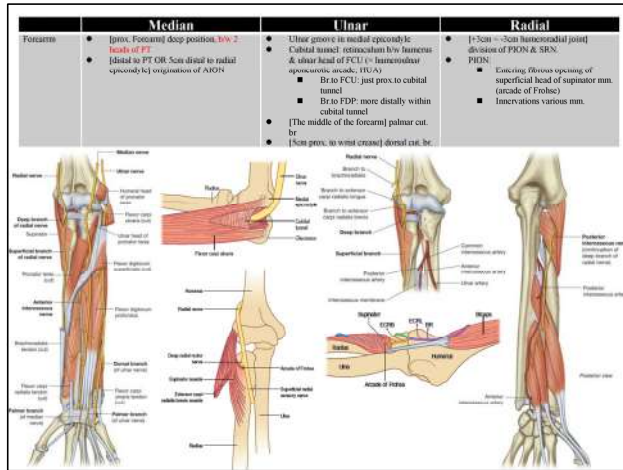




2. Nerve of upper limb

	Median	Ulnar	Radial
Root	<ul style="list-style-type: none"> C5,6,7 – lat.cord – 1-3 finger, thenar sensory, prox. forearm mm. C8,T1 – med.cord – 4 finger sensory, distal mm. 	<ul style="list-style-type: none"> C8,T1 (& sometimes C7) 	<ul style="list-style-type: none"> C5, 6, 7, 8 (& rarely T1)
Br. Pl	<ul style="list-style-type: none"> All trunk, medial & lateral cord (generally S: upper / M: lower) 	<ul style="list-style-type: none"> Lower trunk, medial cord 	<ul style="list-style-type: none"> All trunk, posterior cord

	Median	Ulnar	Radial
Arm	<ul style="list-style-type: none"> [axilla] close contact with ulnar, radial m. & axillary n. [half above elbow crease] 1st motor br to PL [posterior forearm] medial to brachial a./biceps tendon br. To FCR, PL, FDS 	<ul style="list-style-type: none"> [axilla] close contact with median, radial m. & axillary n. [half way down the humerus] pierce intermuscular septum & located b/w intermuscular septum & medial head of triceps 	<ul style="list-style-type: none"> [lower margin of axilla] br. to triceps b/w medial & lateral head of m. p. / wind around the back of humerus Deborah insertion region (most superficial) lymphatics, m.c. compression site Origin of post. brachial cut. n / post. interbrachial cut. n. Sleeveless a. are often spared

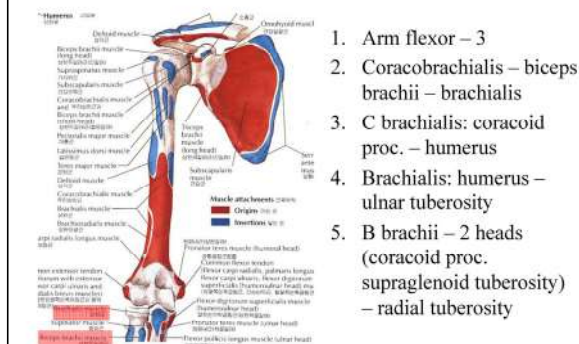


3. Muscle of upper limb

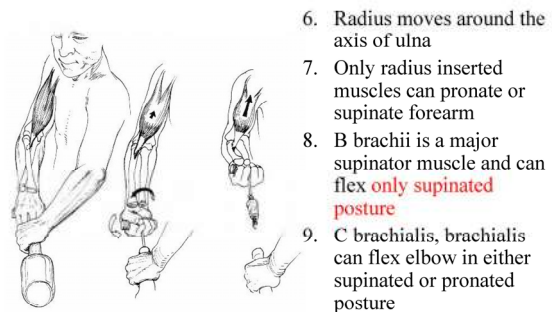
Overview

- Anterior arm
 - 3 musculocutaneous
- Anterior forearm
 - 8 (4-1-3) all median except
 - 1 (FDS) + ½ (FDP) ulnar
- Hand
 - All ulnar
 - Except LOAF 3 (OAF) + ½ (L) median
- Posterior arm & forearm
 - 12 all radial

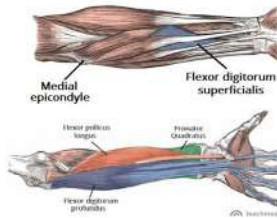
Anterior arm



Anterior arm (Cont.)

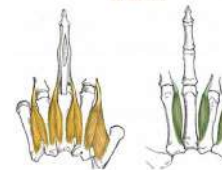


Anterior forearm

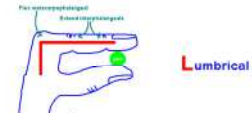


1. ME: flexor pronator
2. Total 8 = 4 supf. + 1 intermediate + 3 deep
3. 4-1-3 (8)
4. Pass – fail – pass – fail
5. P longus → T carpal lig.
6. FCR → radial side of PL
7. FDS (bye bye muscle) vs FDP + FPL (fist)
8. All median except FCU, FDP (1 + ½: ulnar) → all ulnar except LOAF

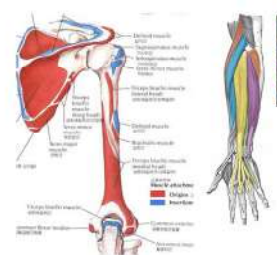
Hand



1. All ulnar except half of L & OAF
2. Palmar interossei (3) + adductor pollicis
3. Dorsal interossei (4) + ADM
4. Middle finger has 2 adductors (1st & 2nd IO)



Posterior arm & forearm



1. T brachii: long–lateral – medial head → olecranon
2. 6 superficial: BR (1) – ECR L/B (2,3) – EDC (4) – EDM (5) – ECU (6)
3. 6 deep: anconeus – supinator – APL, EPB – EPL – EI

Summary

1. Drawing the brachial plexus – RTDCB
2. Nerve of upper limb – anterior arm / anterior forearm – posterior arm & forearm
3. Muscle of upper limb – 3 flexors & 1 extensor in arm / 8 (4-1-3) in anterior forearm / 12 (6-6) in posterior forearm